

**FOR TWO MONITORS**

# SV08

## DESKTOP MOUNT FOR

TOR TWO 19"-27" SCREENS, VERTICAL SETUP

The SV08 desk mount is a solution suitable for installation of two monitors up to 27" in a vertical setup. Easy tilting of the monitor in the range from  $-70^{\circ}$  to  $+70^{\circ}$  allows the user to obtain optimum adjustment of the screen and the maximum comfort. Two types of mounting options and height adjustment of monitors ensured by SV08 mean comfort and optimise the workplace. Cable management is integrated in the mount for smart installation.



### FEATURES

- 2 types of mounting options included (desk clamp & desk through mount)
- Height adjustment of monitors
- Possibility of tilting the monitor from  $-70^{\circ}$  to  $+70^{\circ}$
- 3 rotation axes of each arm
- Integrated cable management

### PRODUCT SPECIFICATIONS

Short index	SV08
Category	Desktop Monitor Mounts
Product group	Display Mounts
Colour	Black
Warranty	Limited 5-years
Number of screens	2
Minimum screen size	19"
Maximum screen size	27"
Maximum load	20 kg
Forward tilting	$-70^{\circ}/+70^{\circ}$
Height adjustment	Yes
VESA Mounting Compatibility	75x75 up to 100x100



Height adjustment



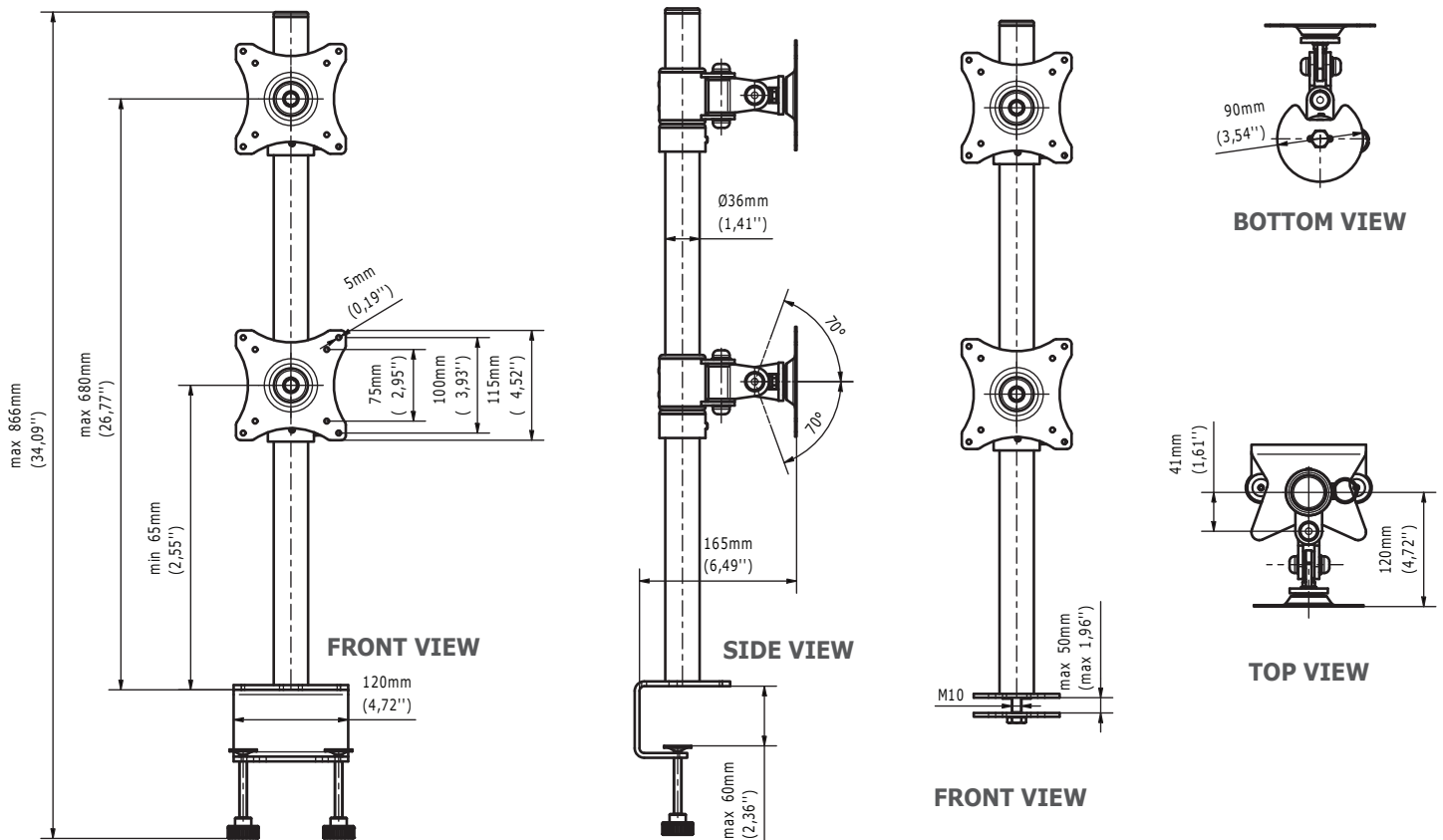
Tilt angle adjustment from  $-70^{\circ}$  to  $+70^{\circ}$



2 types of desk mounting options



Cable management

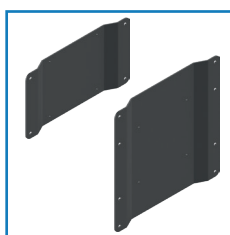

**TECHNICAL SPECIFICATIONS**

Product dimensions	W: 120 mm D: 165 mm H: 800 mm (W:4,72" D:6,50" H:31,50")
Product weight	4 kg (9 lb)
Max. distance from mounting surface	680 mm (26,77")
Min. distance from mounting surface	65 mm (2,56")
Max. mounting pattern	100 mm x 100 mm
Min. mounting pattern	75 mm x 75 mm

**LOGISTICS DATA**

SAP INDEX	EAN CODE	COLOUR	PACKAGE DIMENSIONS	PACKAGE WEIGHT
WUBI-SV08c-B	5902841103221	BLACK	820 x 185 x 120 mm 32,28 x 7,28 x 4,72"	4,5 kg 10 lb

HS Code (Harmonized System): 732690, HTS Code (Harmonized Tariff Schedule): 7326909890, Country of Origin: Poland

**ACCESSORIES AND RELATED PRODUCTS**


GDA1/GDA2



SVA01/SVA02



SV01



SV05