

Cavus

PLAYBAR

Cavus



SNPBF

Frame that is specially designed to mount a PLAYBAR to most articulating TV Mounts and floor stands. The height is adjustable so it can be used in combination with most TV sizes. The PLAYBAR can be locked to the mount.

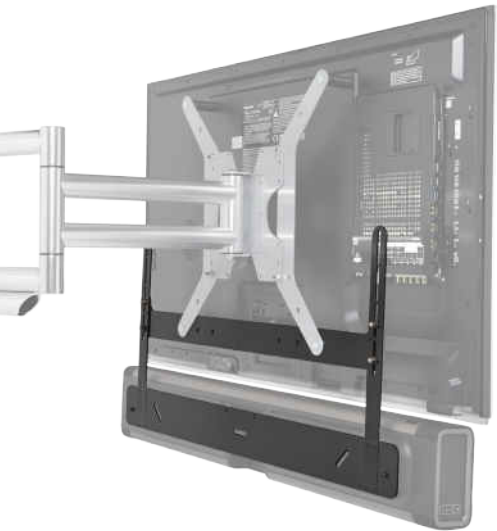


Distribution by: Electrobot B.V.

PO Box 81, 2150 AB Nieuw-Vennep, The Netherlands
+31 (0)252-345445, www.cavus.eu, info@electrobot.nl

Cavus is an independent mount manufacturer and supplier which is not, in any way affiliated with the brands the mounts are suitable for. All trademarks referenced are property of their respective holders and are for identification purposes only. These products are not sponsored by, affiliated with, manufactured by or distributed by the named manufacturers.

Accessories for SONOS



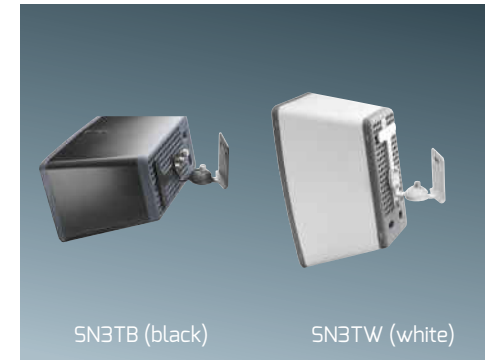
Wall mount for PLAY:1



Swivel up to 45° left / 45° right
 Minimum distance from the wall 20 mm
 Tilt 0° of 15°
 (separate 15° mount is included)



Wall mount for PLAY:3



Swivel up to +/-45° (horizontal speaker)
 +/-60° (vertical speaker)
 Tilt -32°/+12°
 Distance from the wall 70 mm



Wall mount for PLAY:5

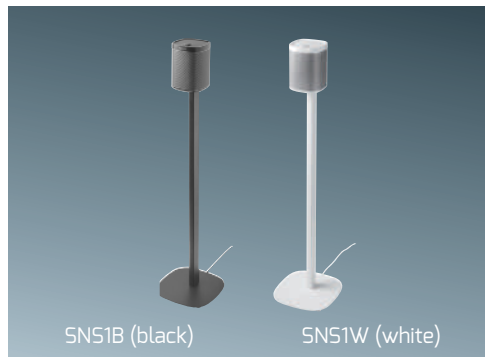


Swivel up to 65° left / 65° right
 Distance from the wall 80 mm
 Slide-out design voor better swivel function



For PLAYBAR see other side of this brochure.

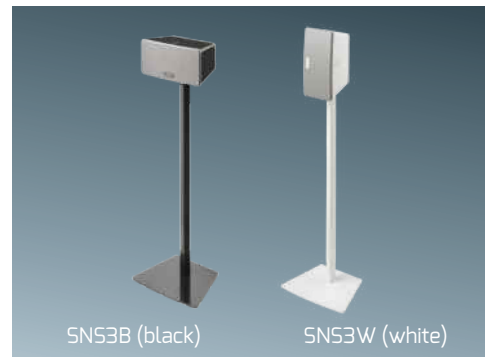
Floor stand for PLAY:1



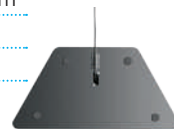
Height up to bottom speaker 79 cm
 Adjustable feet
 Cable feed through the pole
 Cable strain relief underneath the base



Floor stand for PLAY:3



Height up to bottom speaker 77 cm
 Adjustable feet
 Cable feed through the pole
 Cable strain relief underneath the base
 PLAY:3 is zowel horizontaal als verticaal te plaatsen



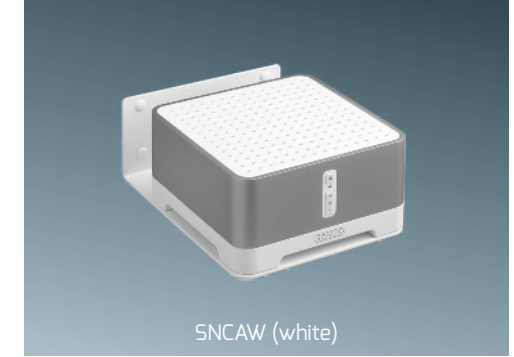
Wall mount for CONNECT



Fixed wall mount
 The CONNECT is centered on the mount
 The horizontal mounting allows for multiple CONNECT's to be placed above each other



Wall mount for CONNECT:AMP



Fixed wall mount
 The CONNECT:AMP is centered on the mount
 The horizontal mounting allows for multiple CONNECT:AMP's to be placed above each other

